

Planning for People – an overview of the SUMP concept and its benefits towards low carbon transport systems

CATCH final conference
Bristol, UWE, 13th December 2011

Sylvain Haon, executive director, Polis

How to use SUMPs ...

How to use 

... to stress co-benefits that low carbon transport will bring ?

... to use information on climate change and transport to influence behaviours and policies ?

... to strengthen the awareness about the importance of low carbon transport ?

SUMP – a concept promoted by the EU



Sustainable Urban Mobility Plans have gained increased recognition and importance at European level

- Action Plan on Urban Mobility
- European Council of Ministers
- 2011 Transport White Paper
 - Examining the **possibility of a mandatory approach** for cities of certain size, according to national standards based on EU guidelines.
 - Link **regional development and cohesion funds** to cities and regions that have submitted a current, independently validated Urban Mobility Performance and Sustainability Audit certificate.



EltisPlus – the reference project for SUMP



- Knowledge **consolidation**, **awareness** raising and **training** on sustainable urban mobility plans in 31 European countries
 - 27 EU Member States + Croatia, Iceland, Liechtenstein and Norway
 - 13 partner consortium
 - Service contract granted by the Executive Agency for Competitiveness and Innovation
 - SUMP-related work is co-ordinated by Rupprecht Consult, Germany (under overall “EltisPlus” co-ordination by FGM AMOR, Austria)
- Based on Action Plan on Urban Mobility (2009):
 - Aim: To accelerate the large scale uptake of SUMPs by local and regional authorities
 - By means of:
 - Guidelines and recommendations
 - Training material and training events
 - Awareness raising, dissemination and promotion
- Internet: www.mobilityplans.eu

Characteristics of sustainable urban mobility planning



- Active **involvement** of all stakeholders and the engagement of citizens
- Commitment to **sustainability**, i.e. balancing social equity, environmental quality and economic development
- Looking "**beyond the borders**"
 - an integrated approach between policy **sectors**
 - cooperation between **authority** levels
 - coordination across **neighbouring** authorities
- Focus on achieving ambitious, measurable **targets**
- Targeting **cost internalisation** i.e. reviewing transport costs and benefits for society
- Including all steps of the **life cycle** of policy making and implementation



Sustainable Urban Mobility Plans

Transport

of people and goods

Vision

how the urban areas should look
twenty+ years from today

Mobility

being mobile, not necessarily
transporting something

Participation

of citizens and stakeholders

Integration

of all relevant sectors, disciplines,
and decision-making levels

Sustainable

balancing economy, ecology,
environment + inter-and intra-
generational justice

Quality of Life

expressed in space for people,
better air, less noise, improved
health and reduced health cost,
ecosystem health, less traffic,
less pollution, time and cost
savings of sustainable urban
mobility solutions, etc.

Human Needs

to move freely, safe, efficient,
and at affordable prices

Urban Area

encompassing a city and its
surroundings, the functional city

Planning Culture

holistic approach moving away
from engineering-based and
infrastructure-based approach

Evaluation

focusing on achievable and
measurable targets

Strategic Plan

resulting from a process building
on existing planning practices

Accessibility

of urban areas and their services



Sustainable urban mobility planning stands for

being able to plan for the future of your city
with its people as the focus.

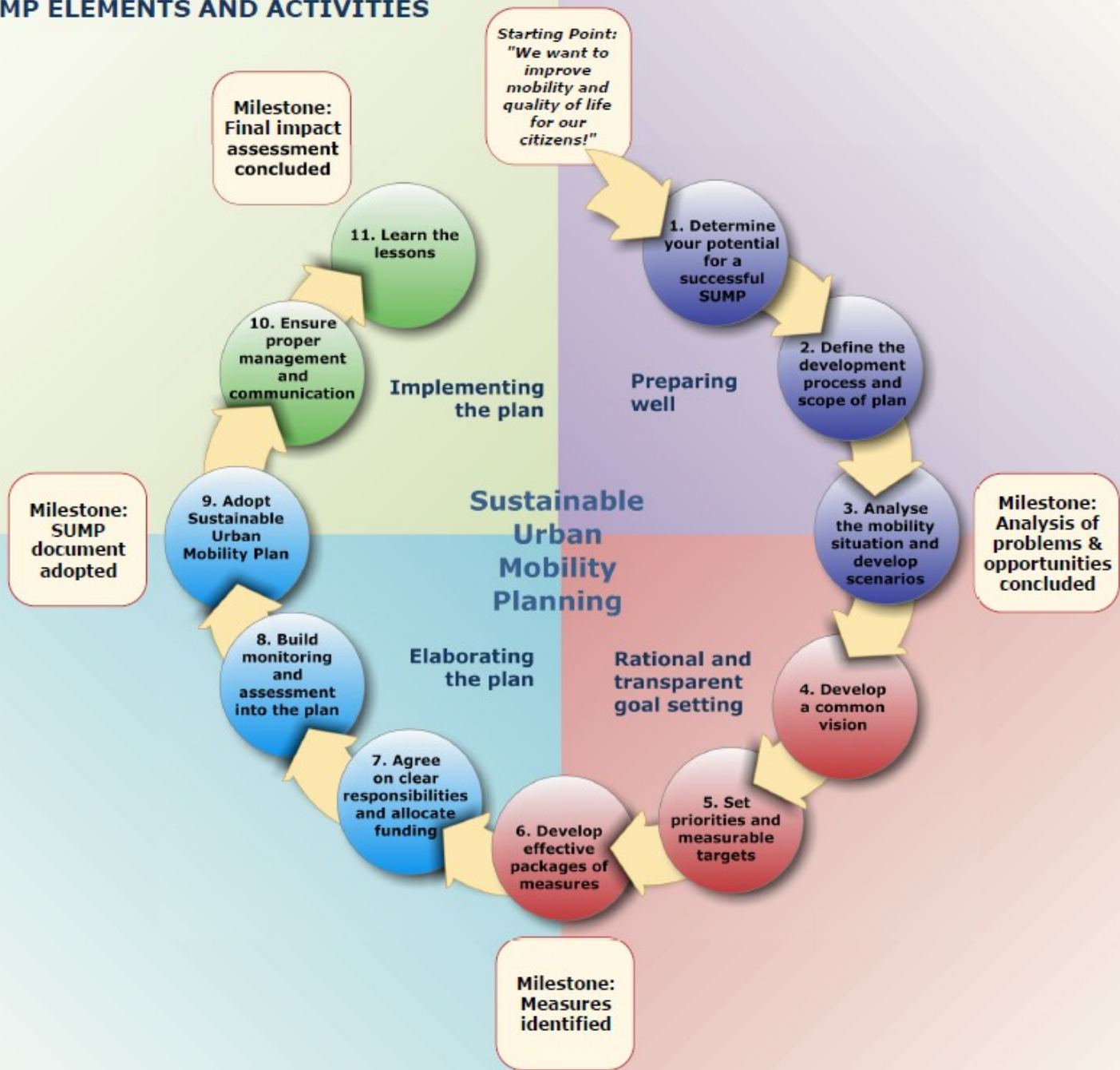
It means
“Planning for People”.

The SUMP planning cycle



- **A full SUMP cycle includes four main phases:**
 - I: Preparing well for the planning process
 - II: Rational and transparent goal setting
 - III: Elaborating the plan
 - IV: Implementing the plan
- **SUMP Guidelines developed in ELTISplus:**
11 Elements (= main steps) and **32 Activities** (= detailing specific tasks)
- **SUMP elements and activities** provide a logical rather than a sequential structure – obvious timing requirements, but process resembles **cycle of activities**, partially running in parallel
- Graphical overview simplified for communication purposes

SUMP ELEMENTS AND ACTIVITIES





Policy cloud



Stakeholder cloud



Governance level cloud



SUSTAINABLE
URBAN MOBILITY
PLANS


National-Authorities

Neighbouring-local-authorities

Districts-or-boroughs

European-Union

Metropolitan-level

Regional-authorities



SUSTAINABLE
URBAN MOBILITY
PLANS



Benefits of SUMP

Part of
INTELLIGENT ENERGY
EUROPE

Planning for People

SUMP, a key tool to



- Achieve low carbon mobility
- Integrate transport policies with other relevant policies
- Influence behaviours through consultation and communication
- Monitor progress against targets and objectives
- Visible impacts on local level

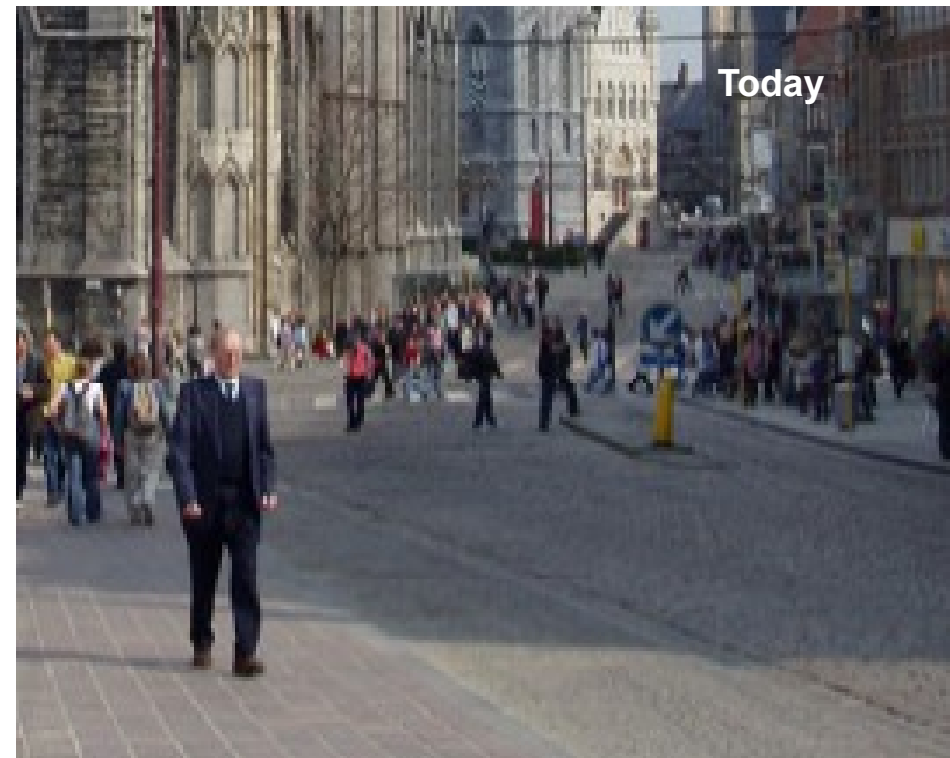
Applying SUMP...

The difference is visible



Example Gent:

20 years ago and today - a transformed city



SUMP key benefits

Planning and policy level



- Involvement of citizens and stakeholders
- Integrated planning
- Multidisciplinary approach
- Capacity building
- Cost efficient planning
- Politicians' positive reputation
- Access to EU-funding (conditionality?)
- Supporting intl., EU, national goals (e.g. CO₂ emissions)

For you...



Aiming to accelerate the large scale take up of SUMPs by local and regional authorities in Europe, ELTISplus is offering:

- **Guidelines** on the development and implementation of SUMPs
- **Awareness raising** events, **technical training** and **experience exchange** workshops in national languages in 31 European countries
- **Case studies** and **best practice examples**
- **Document library** on www.mobilityplans.eu



Thank you for your attention!

Sylvain Haon

shaon@polisnetwork.eu

www.mobilityplans.eu

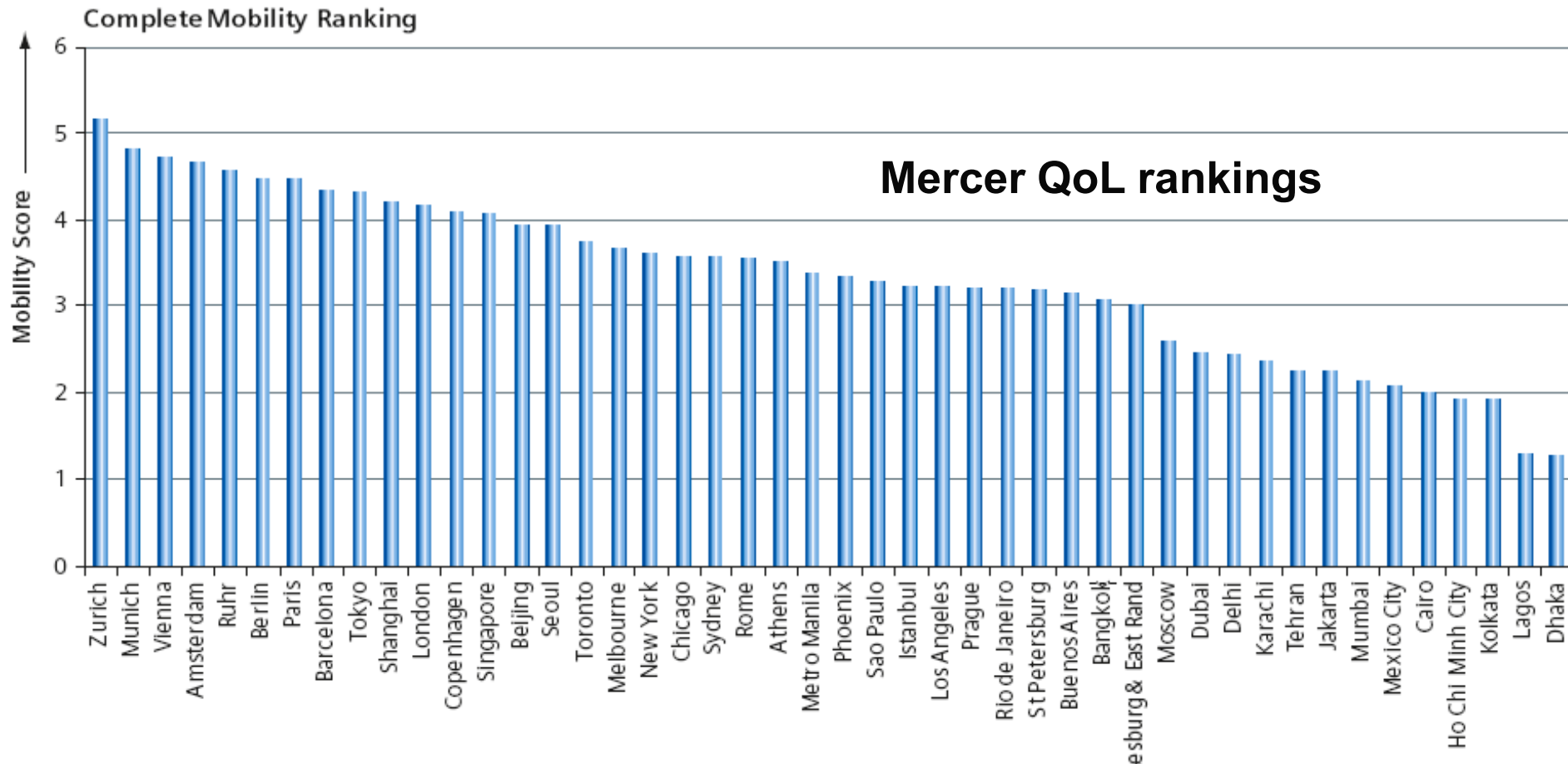
City without a SUMP

Istanbul....



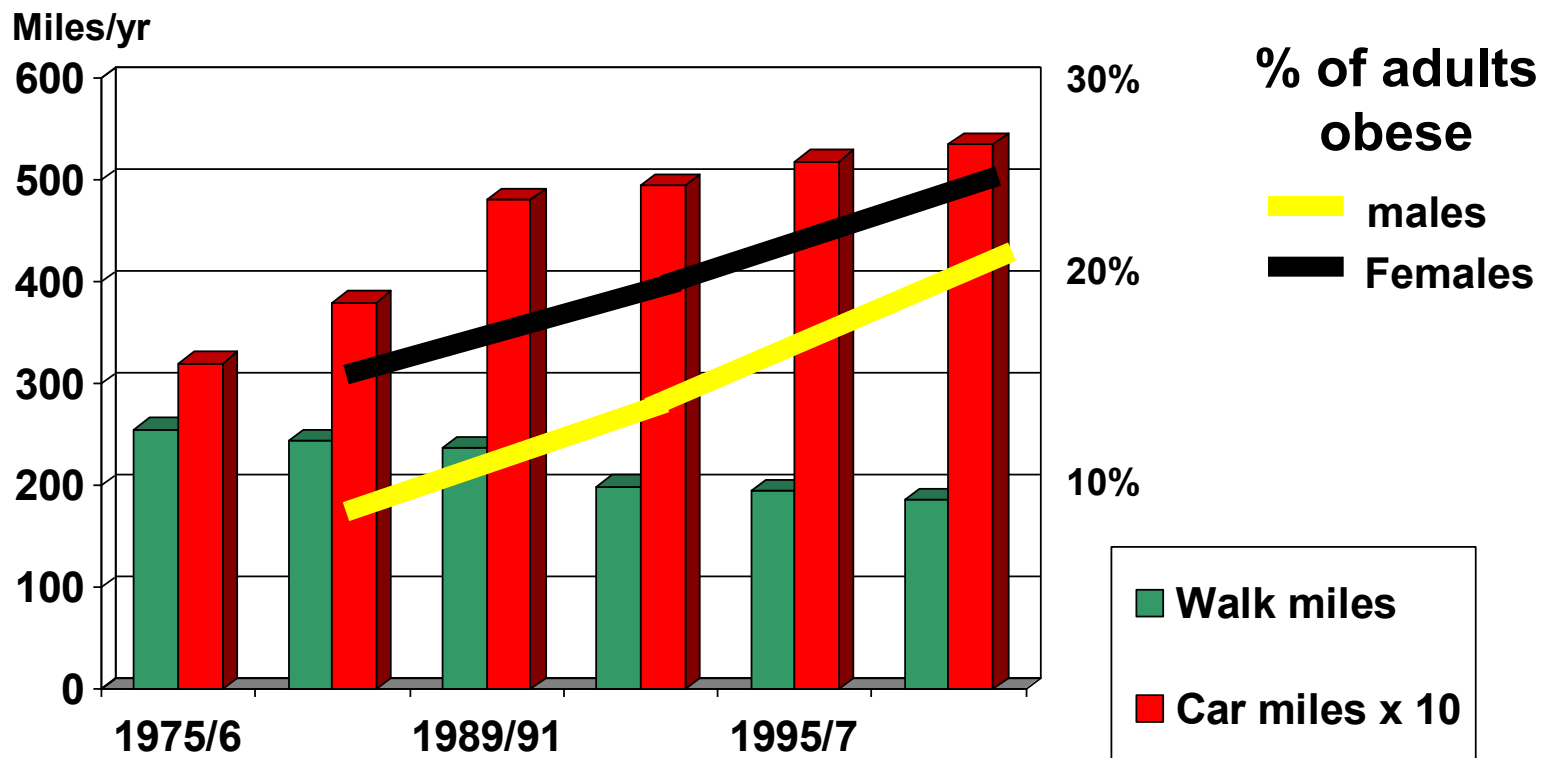
SUMPs and quality of life

- Cities with SUMPs have higher qualities of transport, higher quality of life and are richer?



SUMPs and health

UK – travel and obesity



Consultation and participation



- England – SUMPs compulsory from 1999
- Consultation/participation key part of these SUMPs and schemes within them
- Local authorities said consultation:
 - Made schemes of higher quality
 - Made it easier to deliver controversial schemes
 - Reduced opposition/late changes to scheme design
 - Increase political support from elected councillors
 - Allowed them to prioritise spending, set targets